

LIVESTOCK EXHIBIT CHAIRPERSONS

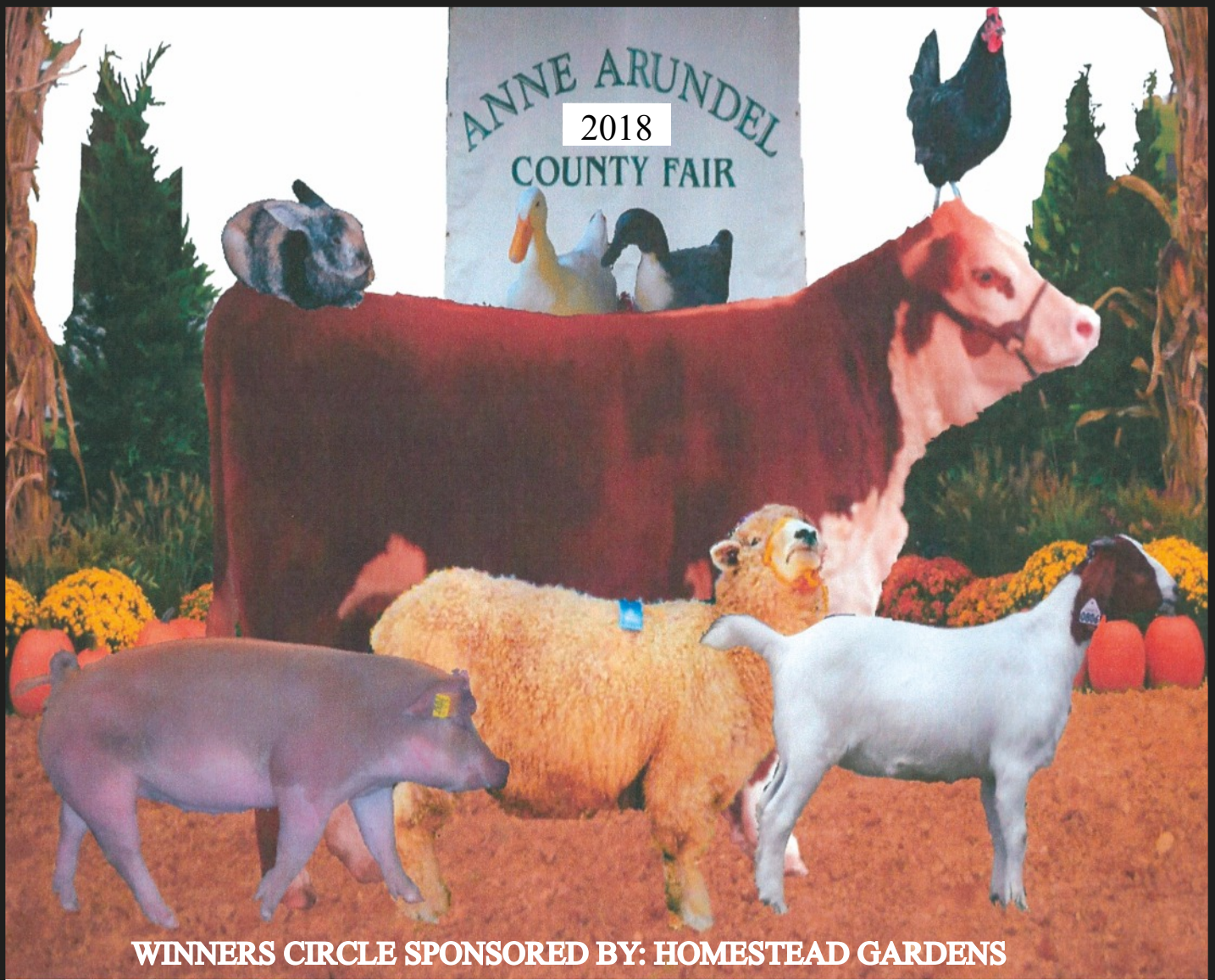
Barn Superintendent:	John Faber	(410) 991-4434
Beef Cattle:	Mary Bowen	(443) 964-4972
Dairy Cattle:	Gail Yeiser	(410) 353-3069
Open Sheep:	Jess Hardy	(443) 603-3460
Open Sheep CoChair	Joseph Degreenia	(410) 615-1109
Open Swine:	Todd Degreenia	(410) 923-3400
Open Dairy Goat:	Mary Henschel	(443) 534-2394
Poultry:	Mitzi Hardy	(410) 995-3039
Rabbit:	Denise Jones	(410) 544-8893



LIVESTOCK RULES Page 75
IAFE CODE OF SHOW RING ETHICS PAGE 76
HEALTH REGULATIONS Page 77-82
BUYERS THANK YOU PAGE 83



LIVESTOCK Page 84-87
POULTRY Page 88
RABBITS Page 89
REGISTRATION FORM PAGE 98



WINNERS CIRCLE SPONSORED BY: HOMESTEAD GARDENS